



Product Service

CERTIFICATE

No. B 16 04 13332 224

Holder of Certificate: **IDEC CORPORATION**

2-6-64 Nishimiyahara, Yodogawa-Ku
Osaka
532-0004 JAPAN



Certification Mark:



Product: **Switches**

The product was tested on a voluntary basis and complies with the essential requirements. The certification mark shown above can be affixed on the product. It is not permitted to alter the certification mark in any way. In addition the certification holder must not transfer the certificate to third parties. See also notes overleaf.

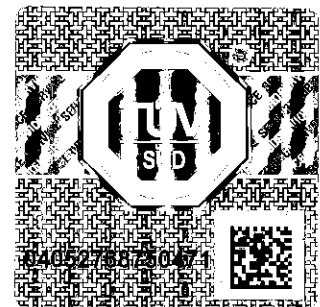
Test report no.: 713076717

Valid until: 2021-04-03

Date, 2016-04-04

(Matthias Fatterspinger)

Page 1 of 4





Product Service

CERTIFICATE

No. B 16 04 13332 224



Model(s): Door Interlock Switch
 HS1L Series
Nomenclature: see enclosure

Parameters:

Rated insulation voltage:	300V or 250V(Connector type)
Class of protection:	II
Degree of protection:	IP67
Utilization category:	AC-15 (250 V, 3 A) or (Connector type: 250 V, 2.5 A) DC-13 (30 V, 4 A) or (Connector type: 30 V, 2.5 A)
Electrical durability:	100.000 operations (900 operations/h)
Indicator light:	24 V DC
Rated voltage of solenoid:	24 V DC

An attachment belongs to this certificate listing more technical details.

Tested according to: EN 60947-5-1:2003/A1:2009
 GS-ET-19:2011

Production Facility(ies): 16464



Product Service

Enclosure to certificate no. B 16 04 13332 224



Door Interlock Switch, HS1L Series

HS1L- DQ 4 4 K L M S R P- G R- X
 1 2 3 4 5 6 7 8 9 10 11 12 13

1. Type HS1L Series
HS1L - Without key interlock
2. Contact configuration

	Door Closing & Locking 	Door closing 	Door Opening	Locking 	Unlocking
Q	1	1	1	1	1
R	1	1	1	2	0
S	1	2	0	1	1
T	1	2	0	2	0
VQ	0	2	1	2	1
VR	0	2	1	3	0
VS	0	3	0	2	1
VT	0	3	0	3	0
DQ	2	0	1	0	1
DR	2	0	1	1	0
DS	2	1	0	0	1
DT	2	1	0	1	0
TT	3	0	0	0	0

All contact elements have direct opening action mechanism () independently.

3. Operational voltage for solenoid (may be followed)
4 - Spring lock / 24V dc solenoid release
7Y - 24V dc solenoid lock / Spring release
4. Rated voltage for indicator light (may be followed)
0 - without pilot light
4 - 24V dc
5. With/without key operator (may be followed)
Blank - without key operator





Product Service

Enclosure to certificate no. B 16 04 13332 224

- K . with key operator
6. With/without lock-release lever (on the reserve side of body) (may be followed)
- | | | |
|-------|---|---------------|
| Blank | - | without lever |
| L | - | with lever |
| D | - | with disk |
7. Actuator's shaky when locked (may be followed)
- | | | |
|-------|---|--------|
| Blank | - | normal |
| M | - | small |
8. Locking Strength (may be followed)
- | | | |
|-------|---|---|
| Blank | - | normal |
| S | - | Strong Tensile Strength Type Actuator (when locked) |
9. Enclosure Color (may be followed)
- | | | |
|---|---|----------------------|
| R | - | Black with red cover |
| B | - | Black |
10. Conduit type (may be followed)
- | | | |
|-------|---|--|
| Blank | - | Screw terminal / threaded as per G 1/2 under JIS B0202 |
| P | - | Screw terminal / threaded as per PG13.5 under DIN40430 |
| M | - | Screw terminal / threaded as per M20 under JIS B0207 |
| C | - | Connector / threaded as per G 1/2 under JIS B0202 |
| PC | - | Connector / threaded as per PG13.5 under DIN40430 |
| MC | - | Connector / threaded as per M20 under JIS B0207 |
11. Lens color of pilot light for multipurpose (may be followed)
- | | | |
|-------|---|---|
| Blank | - | without pilot light for multipurpose and for solenoid |
| F | - | without pilot light for multipurpose only |
| R | - | Red |
| G | - | Green |
| A | - | Amber |
| Y | - | Yellow |
12. Lens color of pilot light for solenoid (may be followed)
- | | | |
|-------|---|----------------------------------|
| Blank | - | without pilot light for solenoid |
| R | - | Red |
| G | - | Green |
| A | - | Amber |
| Y | - | Yellow |
13. Additional letters and/or numbers (may be followed)
- | | | |
|---|---|--------------------------|
| X | - | Manufacturer control No. |
|---|---|--------------------------|

